

OPTIMISED WELDING PERFORMANCE AND BETTER COST CALCULATION

SMART NETWORKING TECHNOLOGY HAS CLEAR ADVANTAGES FOR RÖSLER

As a surface processing specialist, Rösler is one of the global market leaders in the manufacture of vibratory finishing and shot blasting equipment. Welding is a key manufacturing technology. Some very different types of steel are used for this, including ordinary structural steel as well as alloyed high-performance steel with manganese content. In the course of renewing the entire welding equipment, covering six systems of the innovative S series and an automated welding Cobot currently in use, Rösler has decided to network all systems via Lorch Connect. Thanks to the digital connection, the company now not only has a clear view of its production processes at all times and can react more quickly in the event of deviations. Follow-up orders can be calculated much

better and the welding data documentation provides optimum security for maintaining high quality standards.

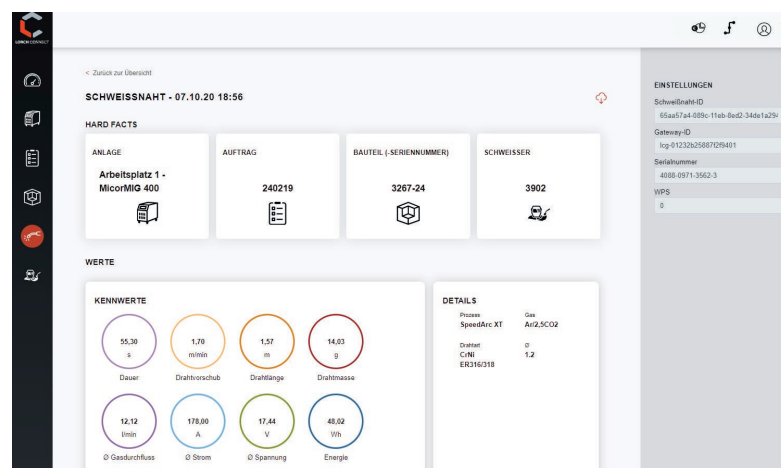
OUR CUSTOMER AT A GLANCE

RÖSLER OBERFLÄCHEN-TECHNIK GMBH

- Untermerzbach, DE
- 1700 employees
- www.rosler.com



The entire welding machinery, including the Lorch welding Cobot that is mainly used to efficiently weld turbines made of manganese steel, is connected to Lorch Connect.



Every individual weld seam is documented with the associated parameter values. Any anomalies or deviations can be corrected quickly this way. The dashboard quickly and clearly displays all important production key figures, such as arc times, wire consumption, or energy consumption. This allows Rösler to always keep an eye on productivity.

High transparency in welding production with minimal installation effort

SIMPLE COST CONTROLLING AND SECURE WELDING DATA DOCUMENTATION ARE WARRANTED

“LorchNet”, a uniform digital interface the Lorch systems are equipped with, allows easy connection of the Lorch Connect Gateway to the respective system via a cable. All welding data are then transmitted to the Lorch Connect portal via the gateway during the welding process. There, they can be accessed easily by web browser at any time and from anywhere. Only individually maintained master data, such as prices for gases and welding rods, energy costs, and labour costs, need to be entered into the system. Orders can then be recalculated easily

and pending offers can be created in detail to quickly determine the actual costs of a part or to get an idea of the profitability of an entire order. Lorch Connect also offers optimal security for the high quality standards at Rösler. Every individual weld seam can be recorded with its production-relevant data and subsequently retrieved and inspected with the associated welding parameters.

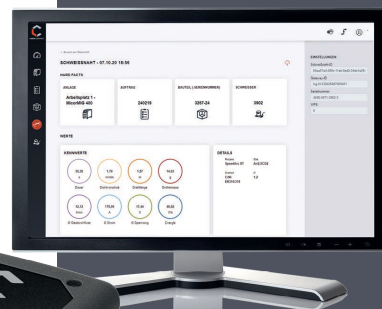


“Lorch Connect offers us some ideal options. In addition to giving us a high degree of transparency in terms of production processes, it specifically allows us to compare all orders with each other and evaluate them. This makes it much easier for us to create a valid calculation for further offers.”

– Stephan Böhnlein, production department head

FACTS

- Easy installation and operation
- No elaborate IT installation
- Continuous overview of all welding parameters
- Simple cost controlling
- Detailed welding data documentation
- Easy tracking in case of complaints
- Easy start into digitisation
- Low investment



www.lorch.eu



LORCH
smart welding