

Q-DATA

Recording welding data is now finally easy.



The Q-Data at a glance

- **Welding data documentation.** You entry into the professional world of documenting, evaluating and analysing welding data.
- **Intuitive operation.** Simple operation thanks to clearly arranged content on the LCD display.
- **Quality assurance.** Monitor such welding parameters as current, voltage, wire feed speed and gas flow in real time while recording is in progress.
- **Quality verification.** The fully integrated measurement equipment reliably delivers correct information about all essential welding parameters captured by the recorder.
- **Innovative user management.** Optional identification of the welder using RFID.
- **Input data the easy way.** Support for USB barcode scanners and other USB recording devices.
- **Storage capacity.** Welding data produced within a period of one month during three shifts a day.
- **Q-Data software.** The simple, yet highly advanced user interface allows you to effortlessly document, analyse and evaluate welding data at any time, making it possible to stay in full control of all aspects of your welding process.



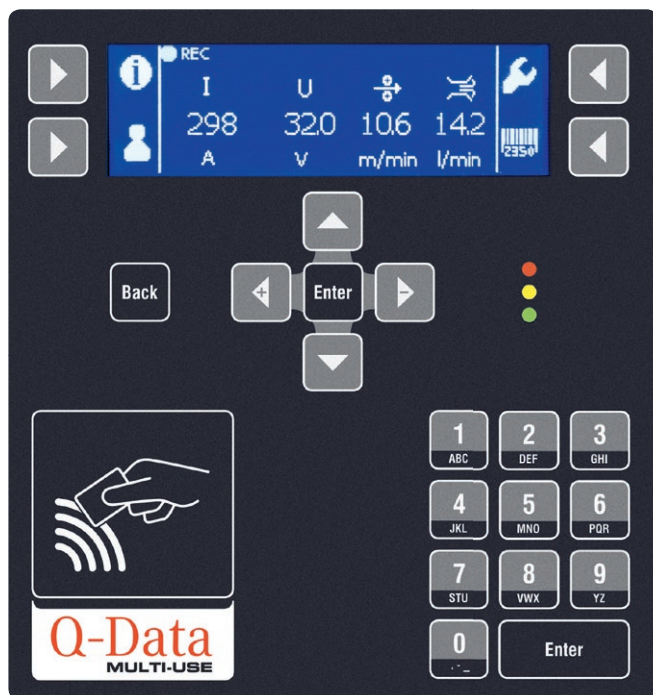
Versions



	Q-Data standard	Q-Data Multi-Use
for separately enabled/prepared Lorch welding machines equipped with LorchNet connection	●	-
for all Lorch systems equipped with a LorchNet interface	-	●
Equipment		
Recording of the welding parameters current, voltage, wire feed speed and gas flow	●	●
USB/Ethernet connection	●	●
Q-Data software for documenting, evaluating and analysing welding data	●	●

● Standard equipment

Operating concept



- generous LCD display including context-sensitive buttons for direct operation
- Real-time display of the recorded welding parameters (welding current, welding voltage, wire feed, and gas flow)
- effortless menu navigation
- RFID detection for easy welder identification
- Numeric keypad for entering order numbers, component numbers, weld seam or WPS numbers

Highlights

“Plug&Weld”

Fully integrated measuring sensors



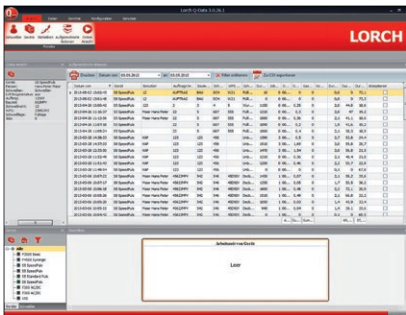
Welding data recording



Welding data evaluation

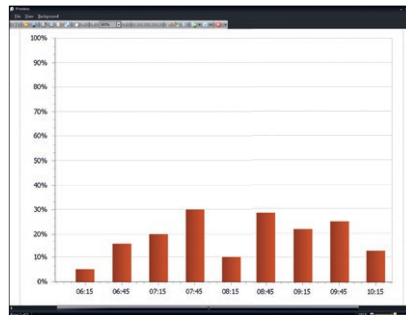


Monitor every aspect of your welding process: thanks to our Q-Data software



Documentation

The captured welding data is displayed in clearly arranged tables and can easily be identified thanks to various filter and search options.



Evaluation

You can aggregate the output of the welding data and evaluate such parameters as the utilization of each machine or workstation. Even individual reports can be optionally provided on demand.



Analysis

Each individual weld can be analysed using easy-to-understand diagrams of the current and voltage characteristics and the measured wire feed speed and the gas flow.

Technical data

		Q-Data
Weight	kg	2.05
Dimensions in mm (L x W x H)	mm	277.5 x 202 x 78.6
Storage capacity	MB	800
Compatibility		LorchNet connection
Data transfer		
USB		●
Ethernet		●

● Standard equipment

Lorch Schweißtechnik GmbH
Im Anwänder 24–26 · 71549 Auenwald · Germany
T +49 7191 503-0 · F +49 7191 503-199
info@lorch.eu · www.lorch.eu

LORCH
smart welding

Abstract from smart welding issue 5 | Technical changes and printing errors reserved.